

IRSF: SIRPOL OFF

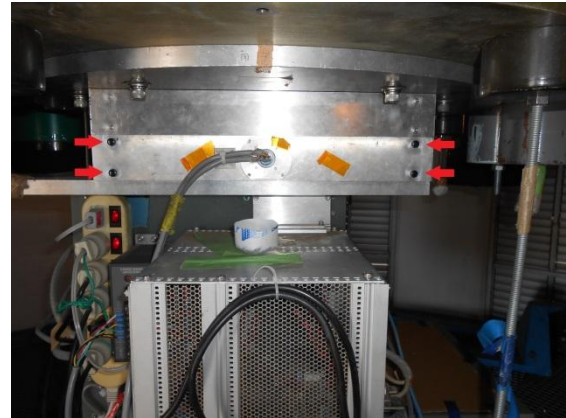
(i.e. changing from Polarimeter-mode to Sirius-mode)

Willie Koorts
Keegan Titus
Pieter Swanevelder

26 December 2007
18 February 2015
16 June 2016

The picture on the right shows the location of the polarimeter module which is situated below the instrument flange, between the telescope and the instrument.

This is the view as seen from the south. The items to be removed are clearly indicated by the arrows pointing towards the thumbscrews.



Preparation

Locate the cardboard box marked SIRPOL (currently kept next to the compressor in the IRSF link passage).

This box includes a manual which is in Japanese but it contains pictures that could be of use.

Retrieve the three items shown in the picture below from the box; (1) is the wrapping and covers for the polarizer wheel, (2) is the wrapping, covers and storage box for the stationary polarizer plate and (3) a package containing two special tools.



Procedure for removal of the polarizers (ie changing from Polarimeter-mode to Sirius-mode)

Firstly, remove the four thumbscrews while supporting the cover plate with your other hand (picture above).



Reach in behind the panel to unscrew and unplug the connector.

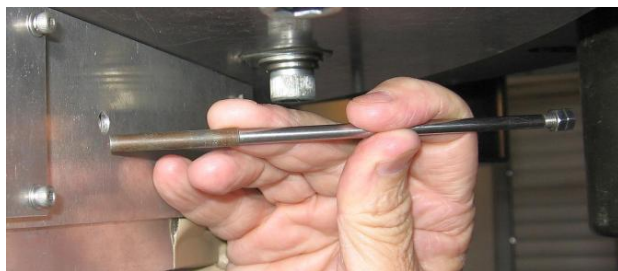
Removing the taper pin

Get the two special tools from their package (picture right) and locate the small hole on the eastern side of the instrument.

Insert the threaded bar in this hole and screw it into the back of the taper pin (pictures below).



Using the block with the groove as a "hammer", knock (pull) out the taper pin from the instrument, i.e. knock the block against the back of the two lock-nuts while sliding it up and down along the rod (pictures). When the pin is removed store it in the plastic bag with the special tools (package 3).

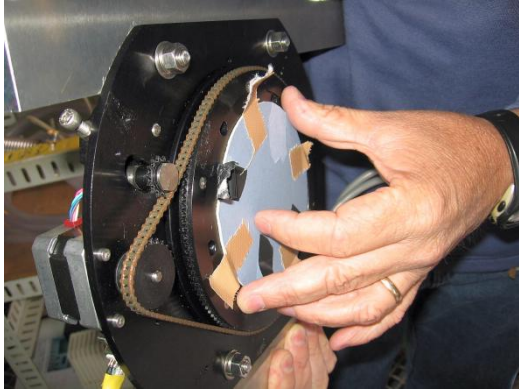


Removing the polarizers

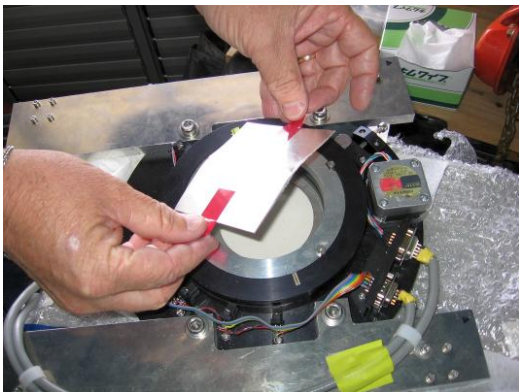
VERY IMPORTANT: Never touch any of the polarized surfaces with your hands or with a metal object, etc.

Once the taper pin is removed, the polarizer wheel is free to slide out. Remove it **VERY CAREFULLY** by sliding it out of the instrument **taking care not to touch or scratch the optical surfaces.**





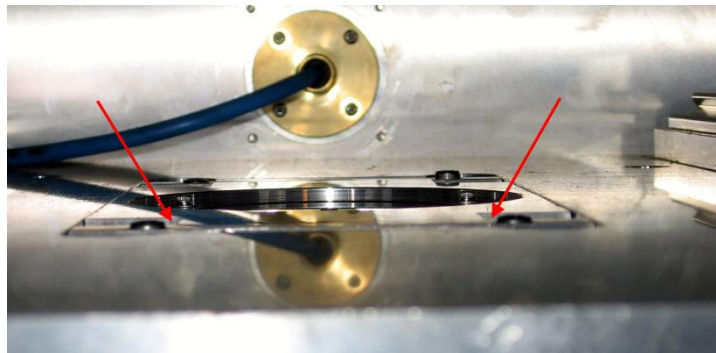
Cover the optics using the covers stored with the wrapping and securely wrap it in bubble wrap.



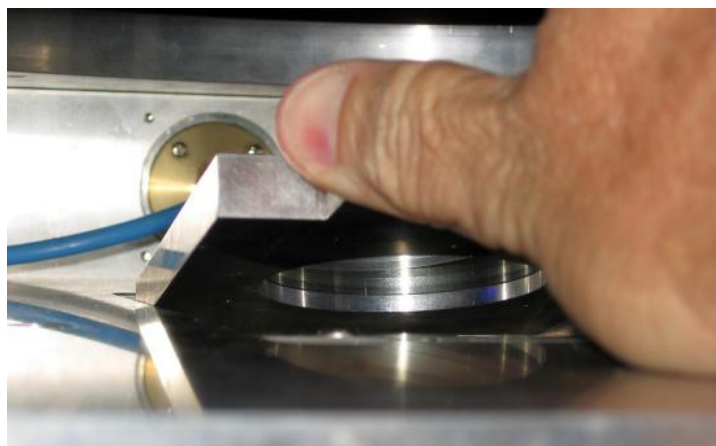
Remove the stationary polarizer

At the bottom of the polarimeter module is the stationary polarizer plate in its holder - this needs to be removed next.

The arrows in the picture on the right indicate gaps where you can place your fingers to lift the polarizer holder from its socket.

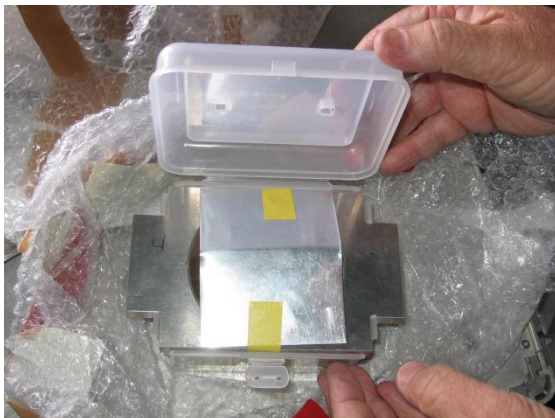
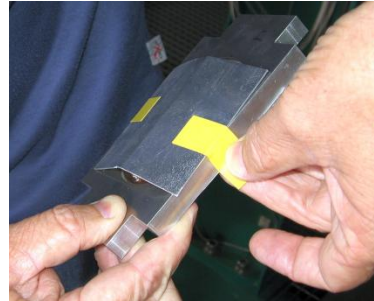
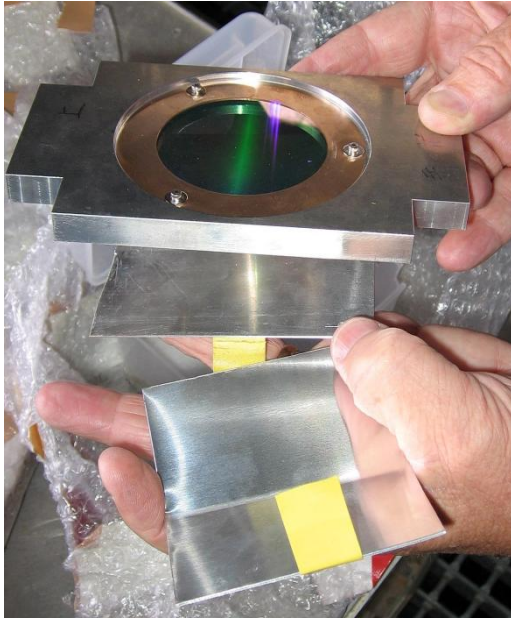


Remove the polarizer plate from the instrument, doing it **carefully without touching the optics.**



Cover up the optic on both sides using the covers stored in the plastic box, again, **taking care not to touch the optical surfaces.**

The plastic storage box has special cut-outs into which the polarizer holder fits. Slide/clip it into these cut-outs, close the box and wrap it in bubble wrap (pictures below).



Closing up

Close up the access panel using the four thumbscrews.

Pack all three packages and the documentation in the SIRPOL box for safe storage.

Place the SIRPOL box next to the compressor in the link passage.