

GFZ Chiller Units – Changeover Procedure

The two chiller units are connected in tandem and a certain procedure must be followed to switch from the one unit to the other. The different units are referred to by their manufactures, York or Carrier.

The current contractor that service these units is TRU-TEMP 021 – 5931177 and the service manager is Gerhard.

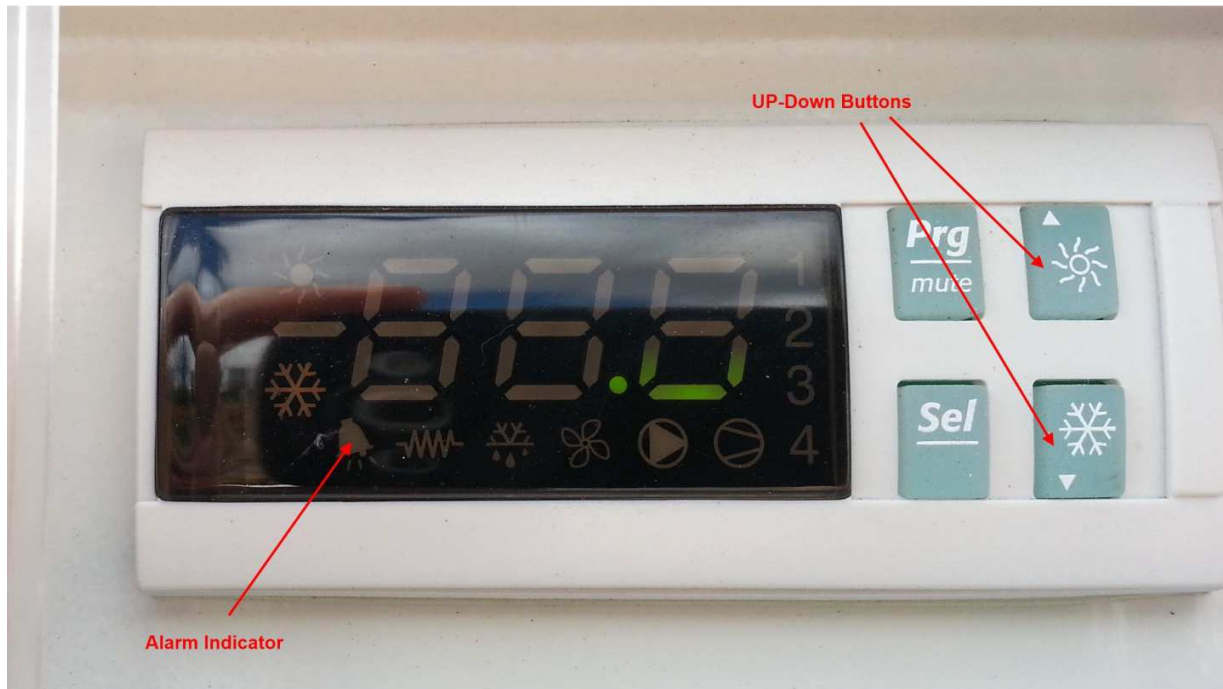
Resetting the Units

The York unit has an electronic controller on the front that can be used to monitor the state of the unit and to reset a fault if one occurred.



York display under normal conditions

A typical error on the unit is a Flow-switch error. The unit will display FL and the red Bell indicator on the display will be lit.



York chiller controller

To reset an error condition press the Up and Down button together for about 5 seconds until the error is cleared.

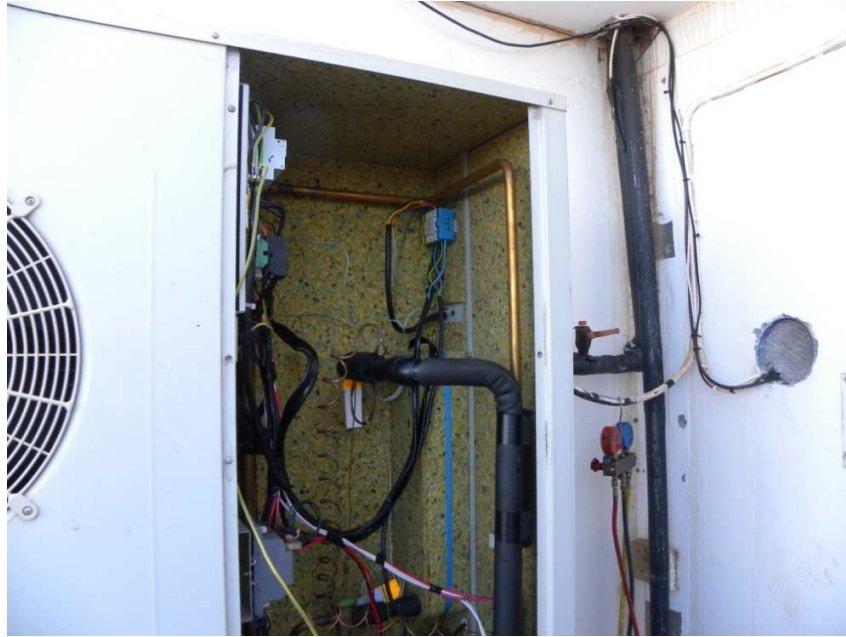
During normal conditions the temperature on the display will be below 10 degrees. This can also be confirmed on the thermometer on the coolant feed lines at the entrance to the building.



Coolant temperature thermometer

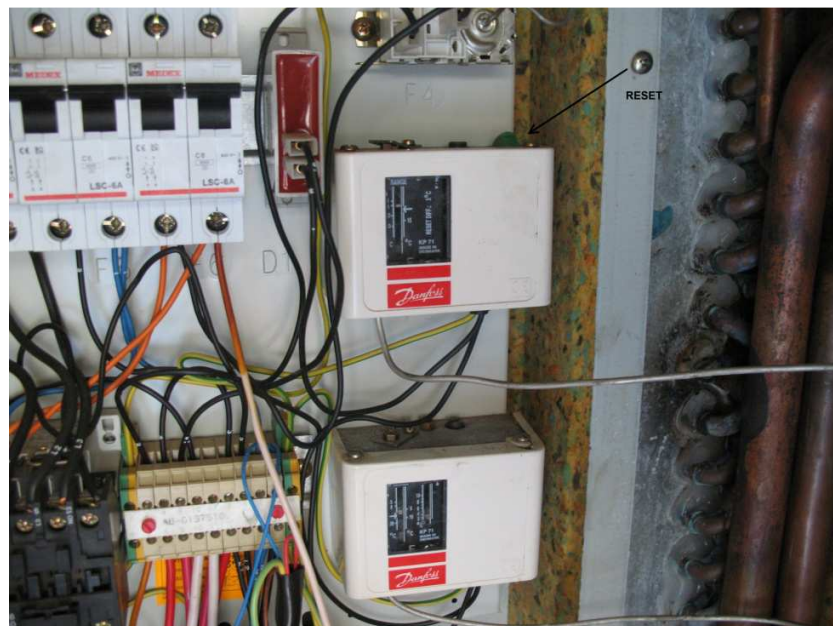
The Carrier unit does not have a visible controller and is a bit more difficult to fault find. It may be required to use the circuit diagrams and trace the circuit. There is a temperature trip in the Carrier unit that sometimes trip and it requires a manual reset.

To gain access, open the right hand side panel of the unit.



Carrier unit with access panel removed

The control units are on the left wall. Towards the back you will find two temperature controllers the reset switch is on the top of the top controller. Press the button toward the back.



Location of reset switch

Changeover Procedure

If a unit fails and the alternative unit must be put into operation the following steps must be followed.

- Switch both chiller units off. The switches are located on the top sides of the chiller units near the top of each unit.

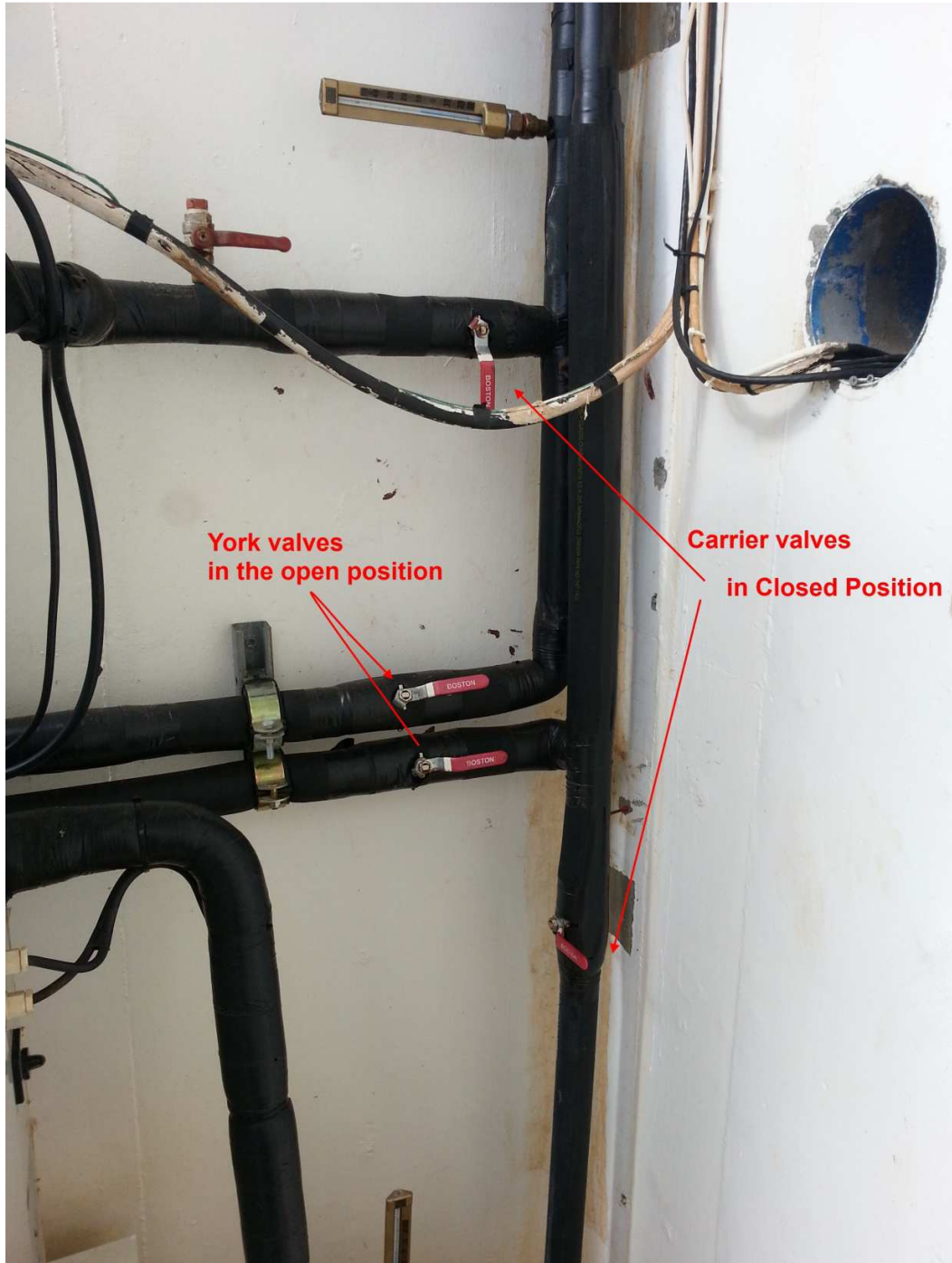


York Main Switch



Chiller Main Switch

- The open close valves in the coolant lines must be open and closed for the correct unit. For the York unit to operate open the two York valves. They are right above each other in the lines from the York chiller. The Carrier valves are about 1m apart in the Carrier feed lines.



Coolant valves

- For the York unit to operate open the York valves and close the Carrier valves
- For the Carrier unit to operate open the Carrier valves and close the York valves

- Switch the pump switch located on the side of the carrier unit to the correct position



Water pump selector switch

- Switch the correct unit main switch on
- Confirm that the unit starts and the temperature is correct.

Top -Up Tank

Above the two carrier units is a tank which holds some coolant for the coolant lines. During normal operation the lines will be topped up automatically if coolant is lost. The tank must be kept at least two thirds full with water.